

An Introduction to Okyo & Rosetsu

2020.5.23(Sat) – 2020.7.13(Mon)

Many painters were active in 18th century Kyoto, including the recently increasingly popular Ito Jakuchu (1716-1800).

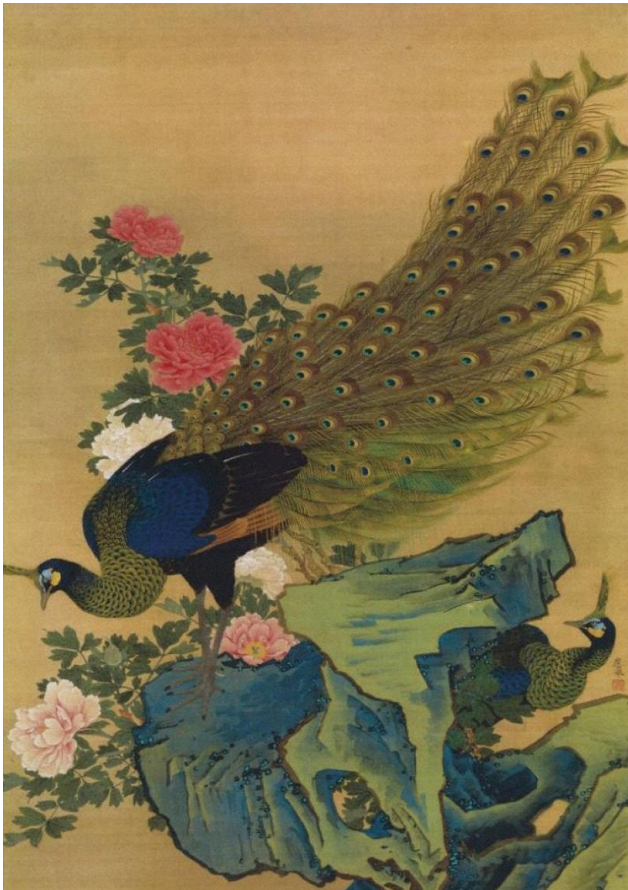
Among them was Maruyama Okyo (1733-1795), who gained popularity for his paintings that emphasized *shasei* (sketching from life), and trained many disciples. One of his students, Nagasawa Rosetsu (1754-1799), mastered Okyo's painting style and attempted several other styles, eventually developing his own original form and leaving behind many unique works.

In this exhibition we will be showing the works of Maruyama Okyo and Nagasawa Rosetsu, exploring their variations, and comparing their compositions of similar subjects to highlight the unique charms of both painters.



English translations by Annika Davis

Let's Make a Comparison



“Peony and Peacocks”

By Maruyama Okyo



“Peony and Peacocks”

By Nagasawa Rosetsu

We exhibit 32 paintings of Okyo & Rosetsu for the first time in public.



“Varied Motifs” Folding Screen by Nagasawa Rosetsu

■ Admission Fee:

	Individual	Group (over 20)
Adult (over 19 years old)	900	800
High School Student (16 to 18 years old)	500	400
Elementary & Junior High School Student (7 to 15 years old)	300	250
A person with disability and an attendant	500	400

- ✓ Children under the age of 7 are free
- ✓ Including admission fee for the permanent exhibition

■ Membership:

Annual Fee 3,000 yen

- ✓ One annual passport per member (free entrance for SAMAC)
- ✓ Discount for paid events at SAMAC

■ Access:

Nice 3 minutes walk from Togetsu bridge, next to the Luxury Collection Suiran hotel

Close to Chou En Lai Monument and Hogoin Temple

5 minutes walk from Randen Arashiyama Station

15 minutes walk from JR Saga Arashiyama Station / Hankyu Arashiyama Station

11 Sagatenryuji-Susukinobabacho 11, Ukyo-ku, Kyoto 616-8385



■ Contact:

support@samac.jp

+81-75-882-1111 (English speaker available)