

THE Hyakunin Isshu

One Hundred Poets, One Poem Each

2020.1.29(Wed) – 2020.4.5(Sun)

Saga Arashiyama Museum of Arts and Culture, located in the foothills of Mount Ogura, is a museum with a close geographical connection to the celebrated poetry collection *Hyakunin Isshu* (*One Hundred Poets, One Poem Each*). The 'Hyakunin Isshu Exhibition' has been designed in the hope of allowing visitors to appreciate the world of these hundred poems, and Japanese poetry more generally, from a wide range of perspectives. On the ground floor we have paintings associated with Arashiyama and wonderful calligraphy by Hon'ami Kōetsu, while upstairs we display 100 works by fourteen modern Japanese artists: drawings, paintings and on-screen images inspired by the *Hyakunin Isshu*.

On Sunday 23rd February 2020 the museum will host a *karuta* tournament called the 'First Chihayafuru Mount Ogura Cup'. To link in with this we would like to show you some insiders' tricks of the competitive *karuta* game, handed down to us by generations of famous *karuta* masters.

We hope you enjoy exploring this world of much-loved poetry which has stood the test of time.





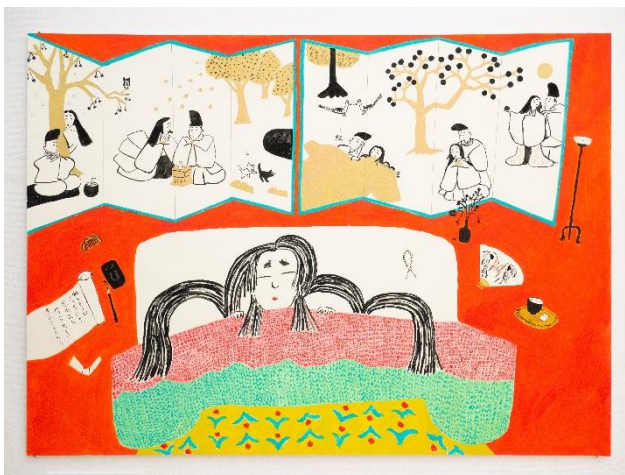
“Folding Screen with Thirty-Six Immortal Poets”

by Ikeda Koson (1803-1858)



“Lieutenant General Zaigo”
(Ariwara no Narihira)

by Kikuchi Keigetsu (1879-1955)



“As I will soon be gone
let me take one last memory
of this world with me -
may I see you once more,
may I see you now?”

The Poem by Izumi Shikibu (about
976 - ?)

Illustration by Shimoda Ayumi
(1967-)

- Open 10:00 – 17:00 (Last admission is at 16:30)
- Closed on every Tuesday (but opens on February 11), February 8(Sat), February 12(Wed)
- Admission Fee:

	Individual	Group (over 20)
Adult (over 19 years old)	900	800
High School Student (16 to 18 years old)	500	400
Elementary & Junior High School Student (7 to 15 years old)	300	250
A person with disability and an attendant	500	400

- ✓ Children under the age of 7 are free
- ✓ Including admission fee for the permanent exhibition

- Membership:

Annual Fee 3,000 yen

- ✓ One annual passport per member (free entrance for SAMAC)
- ✓ Discount for paid events at SAMAC

- Free English Guide Tour for a Group (about 30min)

Please contact support@samac.jp to check availability. Reservation is required in advance.

- Access:

Nice 3 minutes walk from Togetsu bridge, next to the Luxury Collection Suiran hotel

Close to Chou En Lai Monument and Hogoin Temple

5 minutes walk from Randen Arashiyama Station

15 minutes walk from JR Saga Arashiyama Station / Hankyu Arashiyama Station



11 Sagatenryuji-Susukinobabacho 11, Ukyo-ku, Kyoto 616-8385

- Contact:

support@samac.jp +81-75-882-1111 (English speaker available)