

Songs: Teika, Bashō, and Yumeji

2019.2.2(Sat) – 2019.5.12(Sun)

Songs: Teika, Bashō, and Yumeji, an exhibition introducing of the arts of Japanese poetry. The Saga Arashiyama district has a history with poetry: it is here that the storied poet and calligrapher Fujiwara no Teika (1162–1241) compiled the Ogura version of the *Hyakunin Isshu*, or *One Hundred Poets, One Poem Each*, a tour-de-force of *waka* verse by the most famous classical poets of early Japan.

Songs: Teika, Bashō, and Yumeji explores the depth of the relationship between poetry and place, beginning with a calligraphy album of the *Hyakunin issū* said to be brushed by Teika and moving through works written by or relating to the renowned haiku master Matsuo Bashō (1644–1694). Among them is a portrait of Bashō by his devoted student, the eminent poet-painter Yosa Buson (1716–1783). The exhibition continues into the modern period with the compositions of poet-painter Takehisa Yumeji (1884–1934), and more.

We hope that through the course of this exhibition, you will be able to enjoy the pure range of experience from which these artists drew inspiration, from the changing seasons to the emotions of everyday life.

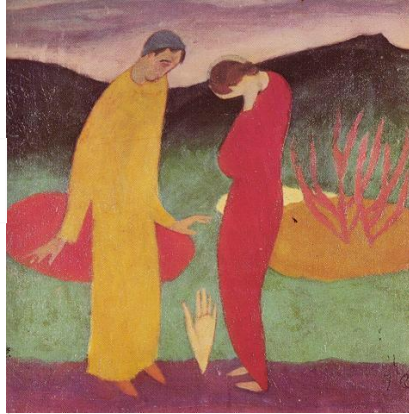




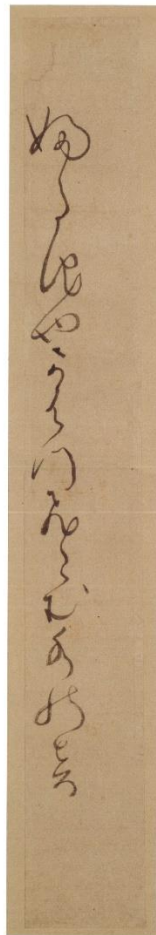
“Corn”
 Painted by Ito Jakuchu
 Haiku Hand-written by
 Kaga Chiyojo



“Dried Salmon”
 by Kino Baitei for the haiku of Yosa Buson



“Seishunfu”
 (The Time of Our Life)
 by Takehisa Yumeji



“An old pond
 A frog leaps in
 The sound of water”
 Hand-written by Matsuo
 Basho

■ Admission Fee:

	Individual	Group (over 20)
Adults (over 19 years old)	900	800
High School Students (16 to 18 years old)	500	400
Elementary & Junior High School Students (7 to 15 years old)	300	250
A person with disability and an attendant	500	400

- ✓ Children under the age of 7 are free
- ✓ Including admission fee for the permanent exhibition

■ Membership:

Annual Fee 3,000 yen

- ✓ One annual passport per member (free entrance for SAMAC)
- ✓ Discount for paid events at SAMAC

■ Free English Guide Tour for a Group (about 30min)

Please contact support@samac.jp to check availability. Reservation required in advance.

■ Access:

Nice 3 minutes walk from Togetsu bridge, next to the Luxury Collection Suiran hotel

Close to Chou En Lai Monument and Hogoin Temple

5 minutes walk from Randen Arashiyama Station

15 minutes walk from JR Saga Arashiyama Station / Hankyu Arashiyama Station



11 Sagatenryuji-Susukinobabachō 11, Ukyo-ku, Kyoto 616-8385

■ Contact:

support@samac.jp +81-75-882-1111 (English speaker available)